

HOW THE BOOK IS SET OUT

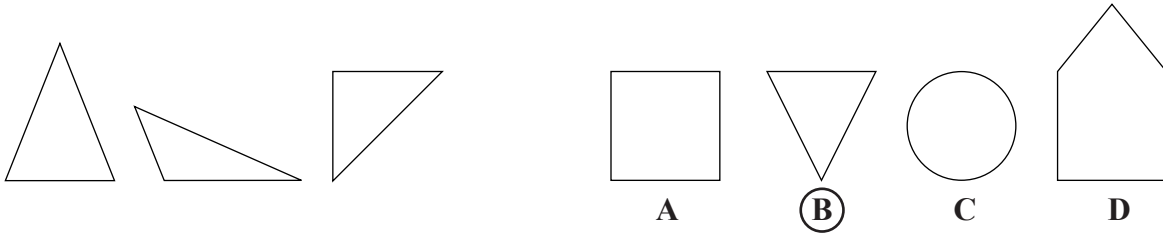
- There are eighteen different topics.

- Each one is dealt with in a separate unit.

- Each unit has two sections:-
 1. The INTRODUCTION with a worked Example and Step by Step instructions.
 2. The EXERCISE with some Hints for extra help.

- A detachable answers sheet is provided at the back.

Which shape is similar to the group of three on the left? Circle one letter. Look at this example.



The answer is **B** because:-
 Like the three shapes on the left, B is a triangle.

Not A, a square.
 Not C, a circle.
 Not D, a pentagon.

STEP BY STEP

THINGS TO LOOK FOR:-

- THE TYPES, COLOURS AND/OR NUMBER OF SHAPES
- THE POSITION OF THE SHAPES AND/OR THE SYMBOLS

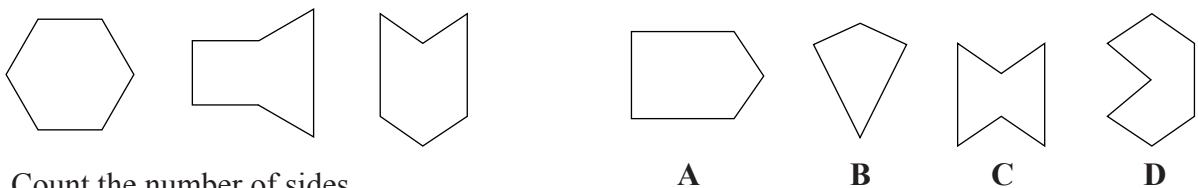
STEP 1:- Find what makes each group of three similar.

STEP 2:- Ignore any answers that are obviously wrong.

STEP 3:- Make sure your chosen answer matches the group of three in **every way**.

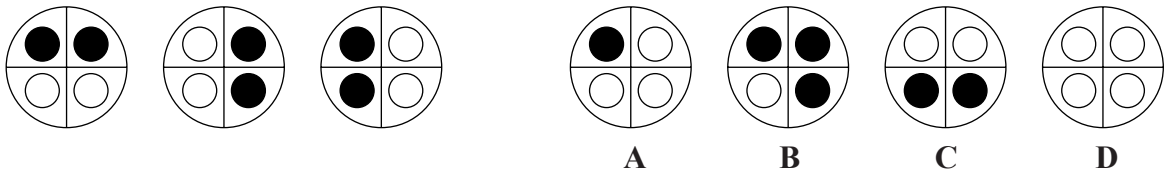
Which shape is similar to the group of three on the left? Circle one letter each time.
 If necessary use the HINTS.

1



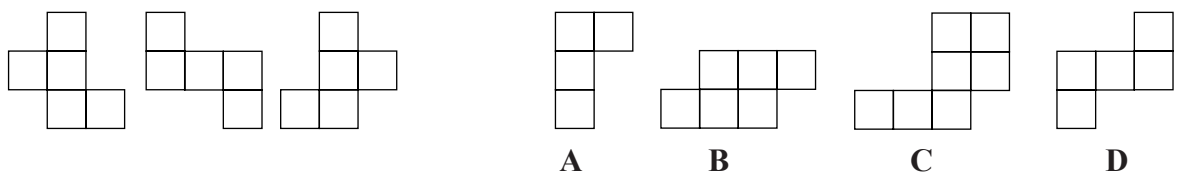
Count the number of sides.

2



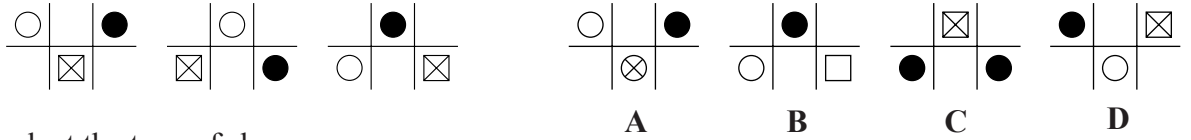
Look at the colours of the small circles.

3



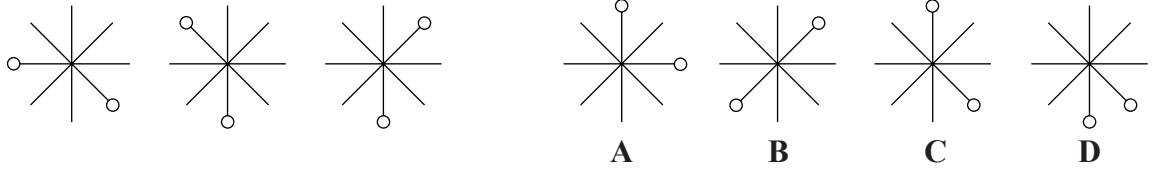
Count the number of squares.

4



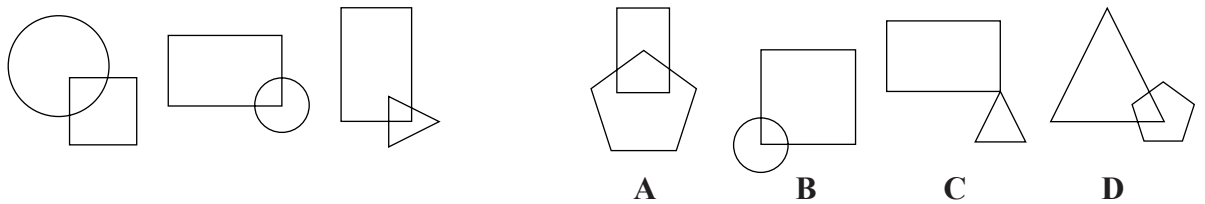
Look at the type of shapes.

5



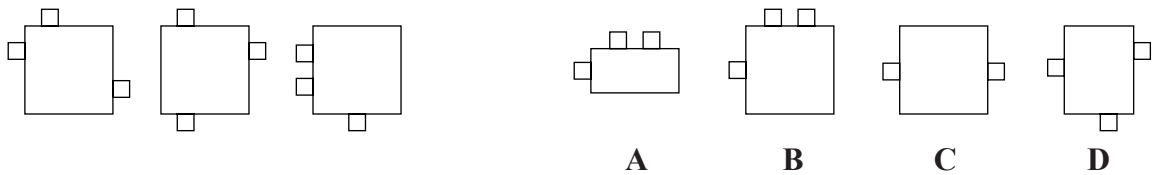
Count the number of lines between the circles.

6



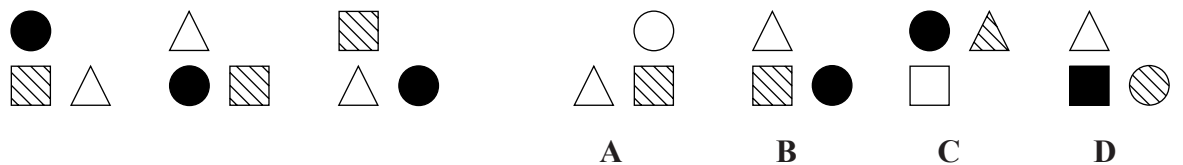
Look at the position of the two shapes.

7



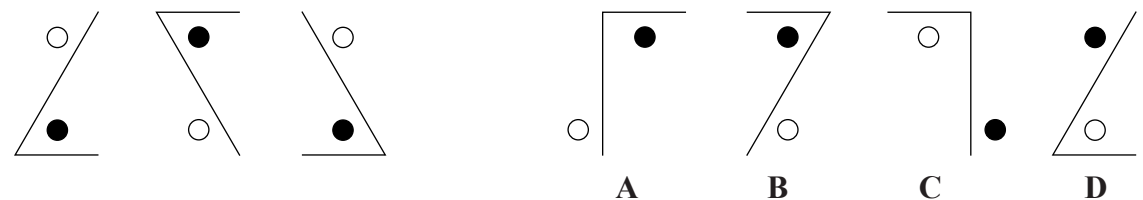
Count **all** the squares in each diagram.

8



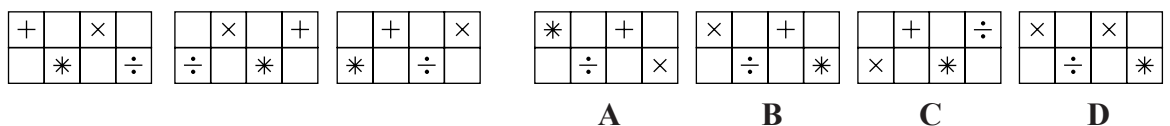
Look at the colours of the three shapes.

9



Look at the type of angle and the position of the circles.

10



Look at the position and the types of symbols.

Score **10**